



ATLANTIC MARINE MV ENIGHENO FLORENCE



GENERAL

Owner	Atlantic Marine & Oilfield Services Ltd
Builder	Arena International, Turkey
Basic Function	Special Purpose Dive WorkBoat
Design	Alfa Marine Design
Classification	Bureau Veritas (BV)
Year of Build	2016

Flag	Nigeria
GRT	34

MAIN PARTICULARS

Length Overall	14.95m
Length BP	12.91m
Breadth Moulded	4.80m
Depth Moulded	2.20m
Draught	1.25m

MACHINERY

Main Engine	2 x BOUDOUIN/ 6W126 M, 450 BHP at 2100rpm Remote Control System with Rexroth Marex SB
Total Power	900 BHP
Cooling System for M/E	Heat Exchanger
Gearboxes	2 x DONG-I/ DMT 150H Ratio 3.5:1
Aux Generators	2 x CAT 28.5KVA at 1500rpm Deck Automatic Start/Stop
Propellers	2 x 4 bladed Fixed Pitch Propellers
Steering Gear	DATA Hydraulic Cylinders 2 x 290 Tm (35 degree/each) Power pack will be driven by M/E
Fire System	CO2 Central Fire Fighting System

PERFORMANCE

Maximum Speed	15knots
Passenger Capacity	16 Persons incl Complete Dive Crew

ACCOMMODATION

Total 2 Crew	
1 x Double Crew Cabin	
1 x Mess Room with TV, Refrigerator, Hot Plates, Dishwasher	
Air Conditioning thru vessel	
Standard Ergonomic Wheelhouse Console	
Seating	13 Main Cabin, 3 Below Mess Cabin

CARGO CAPACITIES

Free Deck Area	20sqm
Diesel Capacity	7.4tons
FreshWater	2tons
Consumption	Engine: 60ltr/hr Generator: 10ltr/hr

DIVING EQUIPMENT

2 x 450E L&W Breathing Air Compressor
12 x 50ltr Air Cylinder Bottles
3 x Air Dive Panels
3-Diver AMCOM Comms
3 x 150mtr Divers Umbilical
3 x DVIS
DVR, split screen, Date, Time, Name
2 x KM77 Dive Hat
1no. KMB28 Dive Hat
Electrical, UPS
2 x Man Riding Davit 500kg SWL

DECK EQUIPMENT

Anchor Windlass	1 x Electrical Driven 180kg HHP 1No. Anchor
Chain	137.5m/12.5mm Q3 type
Deck Crane	Hydraulic Knuckle Boom Boom at 6m SWL 250kg

RADIO & NAVIGATION

Radar	1 Set of KODEN-MDC/2540BB Marine Radar-72 Nm
GPS Navigator	1 Set of KODEN-CVG/200 Plotter Sounder
AIS	1 Set of KODEN-KAT/100 Class A AIS Transponder
Magnetic Compass	
GMDSS Portable Radio Sealink	
EPIRB	
GPS Chart Plotter with Sea Map 6inches	
Handset Bearing Compass	
GPS Navigational System	
SAT Transponder	
Binoculars	

PUMPS

Bilge & Fire Pump	25m ³ /h - 30m total head self priming
G.S & Fire Pump	25m ³ /h - 30m total head self priming
Sewage	5m ³ /h - 20m total head
D/O Transfer Pump	3m ³ /h - 20m total head
F/W Booster Set	2 x 1m ³ /h - 20m total head

GENERAL FEATURES

Rubber Fenders arranged as per GA
Main Engine Maintenance Hatch 1.80m x 1.10m (PS &STB)
Durable Epoxy Paint Sytem by Jotun
Good Manoeuvrability
Hot Water System
FM 200 System Installed automatically operated in Machinery space for fire fighting
CCTV - Machinery Space/Mess Room/ Fore & Aft Deck
Alarm Monitoring system for D/O & F/W Tanks high and low levels



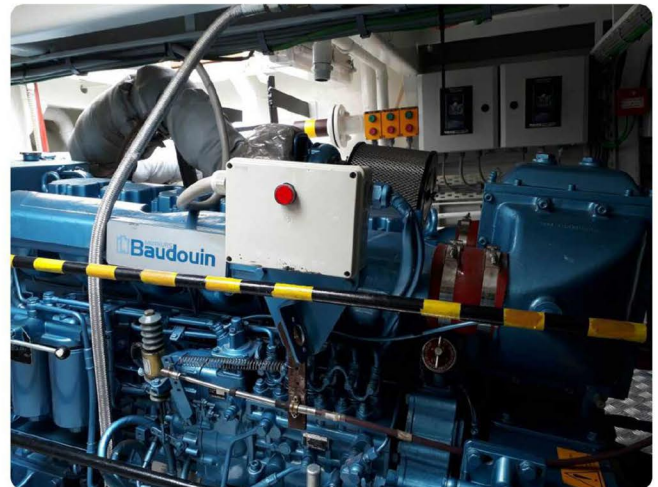
3 Diver Panel and Diver Electrical Rack (Comms, DVR, UPS)



Dive Deck



Engine Room



Engine Room



Engine Room Control Panel



2 no. 28KVA generators and Dive Air Compressor